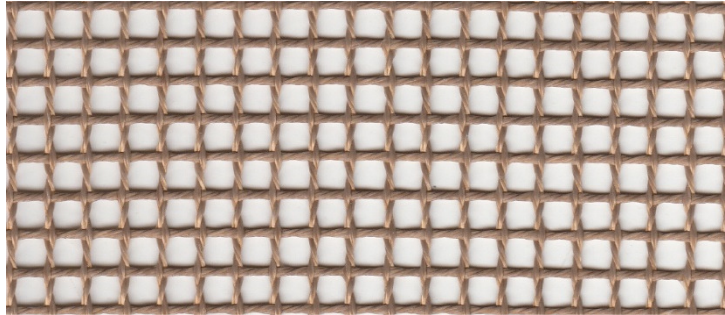


# 9002



Product	Product category	Coating
PTFE GLASS FABRIC	OPEN MESH SERIE	PTFE

Properties	Metric		Imperial	
Standart width(s) <i>Please ask for other widths</i>	1850, 2050, 2300, 2500, 2750, 3200, 3350, 3600, 5000	mm	73, 81, 90.6, 98.5, 180.3, 126 132, 142, 197	inches
Thickness	0,90	mm	0.0354	inches
Weight	460	gr/m <sup>2</sup>	13.57	oz/sq yd
Mesh size	4 x 4	mm	0.1574 x 0.1574	inches
PTFE content	31	%	31	%
Open area	64	%	64	%
Elongation	< 1	% at 1.7 kg/cm	< 1	% at 1.7 kg/cm
Tensile strength	3000	N/5 cm	343	Ibs/inches
Temperature resistance	-73 to 260	°C	-100 to 500	°F

**Excellent properties of Fiberflon Open Mesh Belts:**

Outstanding temperature resistance, Resistant to corrosive agents, Low thermal mass, Controlled porosity, Superior non-stick surface, easy to clean, High dielectric strength, Dimensional stability, Non-toxic, Superior tracking. The product does not contain banned substances as described in RoHS directive and will not affect RoHS compliance.



Note: Nominal thickness, weight and tensile strength values are typical and are not intended as a specification minimum. Weight Tolerance g/m<sup>2</sup> = ±%5  
 All technical data are based on average values. These values are not intended for use in preparing specifications. Technical information contained here in are based on test results FIBERFLON believes to be reliable, but they are not to be construed in any manner as warranties expressed.  
 All data is subject to change without notice.