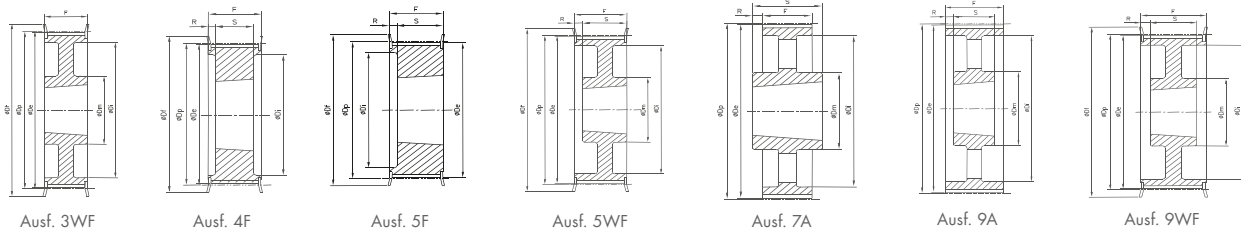


Description	Number of teeth	Type	Material	D <sub>p</sub> (mm)	D <sub>e</sub> (mm)	D <sub>i</sub> (mm)	F (mm)	S (mm)	R (mm)	D <sub>m</sub> (mm)	D <sub>i</sub> (mm)	Taper bushing	Weight without bushing (≈kg)
<b>L - Pitch 9.525 mm for belt width 050</b>													
TB 18 L 050	18	8F	ST	54.57	53.81	60	19	22	3	40	-	1108	0.200
TB 19 L 050	19	8F	ST	57.61	56.84	64	19	22	3	40	-	1108	0.200
TB 20 L 050	20	8F	ST	60.64	59.88	66.5	19	22	3	40	-	1108	0.200
TB 21 L 050	21	8F	ST	63.67	62.91	70	19	22	3	45	-	1108	0.300
TB 22 L 050	22	8F	ST	66.70	65.94	75	19	22	3	45	-	1108	0.300
TB 23 L 050	23	8F	ST	69.73	68.97	79	19	22	3	55	-	1108	0.400
TB 24 L 050	24	8F	ST	72.77	72.00	79	19	22	3	55	-	1108	0.400
TB 25 L 050	25	8F	ST	75.80	75.04	82.5	19	22	3	58	-	1108	0.500
TB 26 L 050	26	8F	ST	78.83	78.07	86	19	22	3	58	-	1108	0.500
TB 27 L 050	27	8F	ST	81.86	81.10	86	19	22	3	58	-	1108	0.600
TB 28 L 050	28	8F	ST	84.89	84.13	91	19	22	3	58	-	1108	0.600
TB 30 L 050	30	8F	ST	90.96	90.20	97	19	22	3	70	-	1108	0.800
TB 32 L 050	32	8F	ST	97.02	96.26	102	19	22	3	70	-	1108	0.900
TB 36 L 050	36	8F	ST	109.15	108.39	115	19	22	3	70	-	1108	1.200
TB 40 L 050	40	8F	ST	121.28	120.51	128	19	25	6	70	100	1610	1.500
TB 48 L 050	48	8WF	ST	145.53	144.77	150	19	25	6	70	124	1610	2.300
TB 60 L 050	60	7W	GG	181.91	181.15	-	19	25	3	70	160	1610	2.000
TB 72 L 050	72	7A	GG	218.30	217.53	-	19	25	3	75	197	1610	3.000
TB 84 L 050	84	7A	GG	254.68	253.90	-	19	25	3	75	233	1610	4.000
TB 96 L 050	96	7A	GG	291.06	290.30	-	19	32	6.5	75	269	2012	5.500
TB 120 L 050	120	7A	GG	363.83	363.07	-	19	32	6.5	75	342	2012	6.800
<b>L - Pitch 9.525 mm for belt width 075</b>													
TB 18 L 075	18	3F	ST	54.57	53.81	60	25	25	-	-	-	1108	0.200
TB 19 L 075	19	3F	ST	57.61	56.84	64	25	25	-	-	-	1108	0.300
TB 20 L 075	20	3F	ST	60.64	59.88	66.5	25	25	-	-	-	1108	0.300
TB 21 L 075	21	3F	ST	63.67	62.91	70	25	25	-	-	-	1108	0.400
TB 22 L 075	22	3F	ST	66.70	65.94	75	25	25	-	-	-	1108	0.400
TB 23 L 075	23	3F	ST	69.73	68.97	79	25	25	-	-	-	1108	0.400
TB 24 L 075	24	3F	ST	72.77	72.00	79	25	25	-	-	-	1108	0.500
TB 25 L 075	25	3F	ST	75.80	75.04	83	25	25	-	-	-	1108	0.600
TB 26 L 075	26	3F	ST	78.83	78.07	87	25	25	-	-	-	1108	0.600
TB 27 L 075	27	3F	ST	81.86	81.10	87	25	25	-	-	-	1108	0.700
TB 28 L 075	28	3F	ST	84.89	84.13	91	25	25	-	-	-	1108	0.700
TB 30 L 075	30	3F	ST	90.96	90.20	97	25	25	-	-	-	1108	0.900
TB 32 L 075	32	3F	ST	97.02	96.26	102	25	25	3.5	-	-	1108	1.000
TB 36 L 075	36	3F	ST	109.15	108.39	115	25	25	3.5	-	-	1610	1.200
TB 40 L 075	40	3F	ST	121.28	120.51	128	25	25	3.5	-	-	1610	1.700

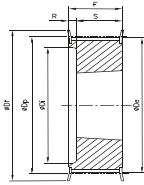




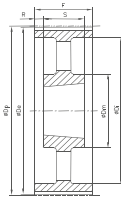
Description	Number of teeth	Type	Material	D <sub>p</sub> (mm)	D <sub>e</sub> (mm)	D <sub>f</sub> (mm)	F (mm)	S (mm)	R (mm)	D <sub>m</sub> (mm)	D <sub>i</sub> (mm)	Taper bushing	Weight without bushing (=kg)
<b>H - Pitch 12.7 mm for belt width 100</b>													
TB 16 H 100	16	5F	ST	64.68	63.31	70	31	22	9	-	45	1108	0.400
TB 18 H 100	18	5F	ST	72.77	71.39	79	31	25	6	-	52	1210	0.500
TB 19 H 100	19	5F	ST	76.81	75.44	82.5	31	25	6	-	56	1210	0.600
TB 20 H 100	20	5F	ST	80.55	79.48	87	31	25	6	-	60	1210	0.700
TB 21 H 100	21	5F	ST	84.89	83.52	91	32	25	7	-	64	1210	0.800
TB 22 H 100	22	5F	ST	88.94	87.56	94	32	25	7	-	67	1210	0.900
TB 23 H 100	23	5F	ST	92.98	91.61	97	32	25	7	-	70	1610	0.900
TB 24 H 100	24	5F	ST	97.02	95.65	102	32	25	7	-	74	1610	1.000
TB 25 H 100	25	5F	ST	101.06	99.69	106	32	25	7	-	77	1610	1.000
TB 26 H 100	26	5F	ST	105.11	103.73	112	32	25	7	-	82	1610	1.200
TB 27 H 100	27	5F	ST	109.15	107.78	115	32	25	7	-	85	1610	1.300
TB 28 H 100	28	5F	ST	113.19	111.82	119.0	32	25	7	-	90	1610	1.500
TB 30 H 100	30	5F	ST	121.28	119.90	127.0	32	25	7	-	98	1610	1.700
TB 32 H 100	32	5WF	ST	129.36	127.99	135.0	32	25	7	80	106	1610	2.000
TB 36 H 100	36	5WF	ST	145.53	144.16	152.0	32	25	7	92	121	1610	2.700
TB 40 H 100	40	5WF	ST	161.70	160.33	168.0	32	25	7	92	138	1610	3.600
TB 44 H 100	44	3WF	ST	177.87	176.50	184.0	32	32	-	106	152	2012	3.800
TB 48 H 100	48	3WF	ST	194.04	192.67	200.0	32	32	-	106	169	2012	3.200
TB 60 H 100	60	9A	GG	242.55	241.18	-	34	32	1	92	223	2012	4.800
TB 72 H 100	72	9A	GG	291.06	289.69	-	34	32	1	92	270	2012	5.700
TB 84 H 100*	84	9A	GG	339.57	338.20	-	34	32	1	92	318	2012	6.800
TB 96 H 100*	96	7A	GG	388.08	386.71	-	34	45	5.5	106	366	2517	8.200
TB 120 H 100*	120	7A	GG	485.10	483.73	-	34	45	5.5	106	462	2517	12.100
<b>H - Pitch 12.7 mm for belt width 150</b>													
TB 18 H 150	18	5F	ST	72.77	71.39	79	45	25	20	-	-	1210	0.600
TB 19 H 150	19	5F	ST	76.81	75.44	82.5	45	25	20	-	-	1210	0.700
TB 20 H 150	20	5F	ST	80.55	79.48	87	45	25	20	-	-	1210	0.800
TB 21 H 150	21	5F	ST	84.89	83.52	91	45	25	20	-	-	1210	1.000
TB 22 H 150	22	5F	ST	88.94	87.56	94	45	25	20	-	-	1210	1.200
TB 23 H 150	23	5F	ST	92.98	91.61	97	45	25	20	-	-	1610	1.300
TB 24 H 150	24	5F	ST	97.02	95.65	102	45	25	20	-	-	1610	1.200
TB 25 H 150	25	5F	ST	101.06	99.69	106	45	25	20	-	-	1610	1.200
TB 26 H 150	26	5F	ST	105.11	103.73	112	45	25	20	-	-	1610	1.400
TB 27 H 150	27	5F	ST	109.15	107.78	115	45	25	20	-	-	1610	1.600
TB 28 H 150	28	5F	ST	113.19	111.82	120	45	25	20	-	-	1610	1.800
TB 30 H 150	30	5F	ST	121.28	119.90	128	45	25	20	-	-	1610	2.000
TB 32 H 150	32	5WF	ST	129.36	127.99	135	45	25	20	80	-	1610	2.300
TB 36 H 150	36	5WF	ST	145.53	144.16	150	45	25	20	92	118	1610	3.100
TB 40 H 150	40	5WF	ST	161.70	160.33	168	45	25	20	92	134	1610	4.000
TB 44 H 150	44	5WF	ST	177.87	176.50	184	45	32	13	106	150	2012	4.400
TB 48 H 150	48	5WF	ST	194.04	192.67	200	45	32	13	106	166	2012	4.800
TB 60 H 150	60	9A	GG	242.55	241.18	-	46	32	7.5	92	215	2517	5.400
TB 72 H 150	72	9A	GG	291.06	289.69	-	46	32	7.5	92	263	2517	6.500

Description	Number of teeth	Type	Material	D <sub>p</sub> (mm)	D <sub>e</sub> (mm)	D <sub>f</sub> (mm)	F (mm)	S (mm)	R (mm)	D <sub>m</sub> (mm)	D <sub>i</sub> (mm)	Taper bushing	Weight without bushing (=kg)					
TB 84 H 150*	84	9A	GG	339.57	338.20	-	46	32	7.5	92	318	2012	8.400					
TB 96 H 150*	96	9A	GG	388.08	386.71	-	46	45	0.5	106	366	2517	11.000					
TB 120 H 150*	120	9A	GG	485.10	483.73	-	46	45	0.5	106	462	2517	14.800					
<b>H - Pitch 12.7 mm for belt width 200</b>																		
TB 18 H 200	18	5F	ST	72.77	71.39	79	58	25	33	-	52	1210	0.800					
TB 19 H 200	19	5F	ST	76.81	75.44	82.5	58	25	33	-	56	1610	0.900					
TB 20 H 200	20	5F	ST	80.85	79.48	87	58	25	33	-	60	1610	1.000					
TB 21 H 200	21	5F	ST	84.89	83.52	91	58	25	33	-	64	1610	1.700					
TB 22 H 200	22	5F	ST	88.94	87.56	94	58	25	33	-	67	1610	1.500					
TB 23 H 200	23	5F	ST	92.98	91.61	97	58	25	33	-	70	1610	1.800					
TB 24 H 200	24	5F	ST	97.02	95.65	102	58	25	33	-	74	1610	1.500					
TB 25 H 200	25	5F	ST	101.06	99.69	106	58	25	33	-	77	1610	1.500					
TB 26 H 200	26	5F	ST	105.11	103.73	112	58	25	33	-	82	1610	1.800					
TB 27 H 200	27	5F	ST	109.15	107.78	115	58	25	33	-	85	1610	1.900					
TB 28 H 200	28	5F	ST	113.19	111.82	120	58	25	33	-	90	1610	1.900					
TB 30 H 200	30	5F	ST	121.28	119.90	128	58	25	33	-	98	1610	2.300					
TB 32 H 200	32	5F	ST	129.36	127.99	135	58	32	26	-	106	2012	3.000					
TB 36 H 200	36	5WF	ST	145.53	144.16	150	58	32	26	80	121	2012	3.000					
TB 40 H 200	40	5WF	ST	161.70	160.33	168	58	32	26	80	138	2012	3.600					
TB 44 H 200	44	5WF	ST	177.87	176.50	184	58	32	26	80	152	2012	4.500					
TB 48 H 200	48	5WF	ST	194.04	192.67	200	58	45	13	90	169	2517	4.600					
TB 60 H 200	60	9A	GG	242.55	241.18	-	60	45	7.5	90	223	2517	7.000					
TB 72 H 200	72	9A	GG	291.06	289.69	-	60	45	7.5	100	270	2517	8.000					
TB 84 H 200*	84	9A	GG	339.57	338.20	-	60	45	7.5	100	318	2517	9.000					
TB 96 H 200*	96	9A	GG	388.08	386.71	-	60	45	7.5	120	366	2517	11.500					
TB 120 H 200*	120	9A	GG	485.10	483.73	-	60	45	7.5	120	462	2517	15.400					
<b>H - Pitch 12.7 mm for belt width 300</b>																		
TB 20 H 300	20	4F	ST	80.85	79.48	87	84	38	23	-	60	1615	1.500					
TB 21 H 300	21	4F	ST	84.89	83.52	91	84	38	23	-	64	1615	1.200					
TB 22 H 300	22	4F	ST	88.94	87.56	94	84	38	23	-	67	1615	1.600					
TB 23 H 300	23	4F	ST	92.98	91.61	97	84	38	23	-	70	1615	1.800					
TB 24 H 300	24	4F	ST	97.02	95.65	102	84	38	23	-	74	1615	2.100					
TB 25 H 300	25	4F	ST	101.06	99.69	106	84	38	23	-	77	1615	2.000					
TB 26 H 300	26	4F	ST	105.11	103.73	112	84	38	23	-	82	1615	2.700					
TB 27 H 300	27	4F	ST	109.15	107.78	115	84	32	26	-	85	2012	3.000					
TB 28 H 300	28	4F	ST	113.19	111.82	120	84	32	26	-	90	2012	2.400					
TB 30 H 300	30	4F	ST	121.28	119.90	128	84	32	26	-	98	2012	2.900					
TB 32 H 300	32	4F	ST	129.36	127.99	135	84	45	19.5	-	106	2517	3.300					
TB 36 H 300	36	4F	ST	145.53	144.16	150	84	45	19.5	-	121	2517	4.500					
TB 40 H 300	40	4F	ST	161.70	160.33	168	84	45	19.5	-	138	2517	6.000					
TB 44 H 300	44	9WF	ST	177.87	176.50	184	86	45	20.5	-	152	2517	6.600					
TB 48 H 300	48	9WF	ST	194.04	192.67	200	86	45	20.5	119	169	2517	7.600					
TB 60 H 300	60	9A	GG	242.55	241.18	-	86	45	20.5	119	223	2517	8.400					
TB 72 H 300	72	9A	GG	291.06	289.69	-	86	45	20.5	119	270	2517	10.400					
TB 84 H 300*	84	9A	GG	339.57	338.20	-	86	45	20.5	119	318	2517	12.500					
TB 96 H 300*	96	9A	GG	388.08	386.71	-	86	76	5	119	366	3030	14.200					
TB 120 H 300*	120	9A	GG	485.10	483.73	-	86	76	5	119	462	3030	18.800					
Taper bushing	1108			1210			1610			1615			2012		2517		3030	
Bore d <sub>2</sub> (mm) from... to...	10-28			11-32			14-42			14-42			14-50		16-65		35-75	

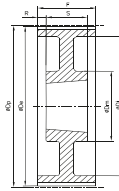
GG = Cast iron ST = Steel **We reserve the right to make technical changes.** \* Non stock items. Bore diameters d<sub>2</sub> see page 4.



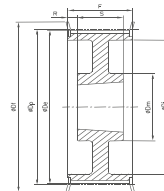
Ausf. 5F



Ausf. 9A



Ausf. 9W



Ausf. 9WF

Description	Number of teeth	Type	Material	D <sub>p</sub> (mm)	D <sub>e</sub> (mm)	D <sub>f</sub> (mm)	F (mm)	S (mm)	R (mm)	D <sub>m</sub> (mm)	D <sub>i</sub> (mm)	Taper bushing	Weight without bushing (≈kg)
<b>XH - Pitch 22.225 mm for belt width 200</b>													
TB 18 XH 200*	18	5F	GG	127.34	124.55	140	64	45	19	-	95	2517	2.600
TB 20 XH 200*	20	5F	GG	141.49	138.69	155	64	45	19	-	110	2517	3.600
TB 22 XH 200*	22	5F	GG	155.64	152.84	170	64	45	19	-	120	2517	4.800
TB 24 XH 200*	24	5F	GG	169.79	166.99	184	64	45	19	-	135	2517	6.100
TB 26 XH 200*	26	5F	GG	183.94	181.14	198	64	45	19	-	150	2517	7.400
TB 28 XH 200*	28	9WF	GG	198.08	195.29	212	64	45	9.5	120	165	2517	9.000
TB 30 XH 200*	30	9WF	GG	212.23	209.44	227	64	45	9.5	120	180	2517	8.600
TB 32 XH 200*	32	9WF	GG	226.38	223.59	240	64	45	9.5	120	195	2517	9.800
TB 40 XH 200*	40	9WF	GG	282.98	280.18	297	64	51	9.5	160	245	3020	13.300
TB 48 XH 200*	48	9W	GG	339.57	336.78	-	64	51	6.5	160	300	3020	19.000
<b>XH - Pitch 22.225 mm for belt width 300</b>													
TB 18 XH 300*	18	5F	GG	127.34	124.55	140	90	45	45	-	95	2517	3.700
TB 20 XH 300*	20	5F	GG	141.49	138.69	155	90	45	45	-	110	2517	4.700
TB 22 XH 300*	22	5F	GG	155.64	152.84	170	90	45	45	-	120	2517	6.000
TB 24 XH 300*	24	5F	GG	169.79	166.99	184	90	45	45	-	135	2517	7.600
TB 26 XH 300*	26	5F	GG	183.94	181.14	198	90	45	45	-	150	2517	9.800
TB 28 XH 300*	28	5F	GG	198.08	195.29	212	90	51	39	-	165	3020	11.600
TB 30 XH 300*	30	5F	GG	212.23	209.44	227	90	51	39	-	180	3020	11.900
TB 32 XH 300*	32	5F	GG	226.38	223.59	240	90	51	39	-	195	3020	13.800
TB 40 XH 300*	40	9WF	GG	282.98	280.18	297	90	51	19.5	160	245	3020	19.500
TB 48 XH 300*	48	9A	GG	339.57	336.78	-	90	51	19.5	160	300	3020	27.000
<b>XH - Pitch 22.225 mm for belt width 400</b>													
TB 20 XH 400*	20	5F	GG	141.49	138.69	155	119	45	74	-	110	2517	6.000
TB 22 XH 400*	22	5F	GG	155.64	152.84	170	119	45	74	-	120	2517	7.200
TB 24 XH 400*	24	5F	GG	169.79	166.99	184	119	51	68	-	135	3020	8.400
TB 26 XH 400*	26	5F	GG	183.94	181.14	198	119	51	68	-	150	3020	10.300
TB 28 XH 400*	28	5F	GG	198.08	195.29	212	119	51	68	-	165	3020	12.300
TB 30 XH 400*	30	5F	GG	212.23	209.44	227	119	51	68	-	180	3020	14.300
TB 32 XH 400*	32	5F	GG	226.38	223.59	240	119	51	68	-	195	3020	19.900
TB 40 XH 400*	40	9WF	GG	282.98	280.18	297	119	89	15	160	245	3535	24.600
TB 48 XH 400*	48	9W	GG	339.57	336.78	-	119	89	15	160	300	3535	30.000

Taper bushing	2517	3020	3535	4040
Bore d <sub>2</sub> (mm) from... to...	16-65	25-75	35-90	40-100

GG = Cast iron ST = Steel **We reserve the right to make technical changes.** \* Non stock items.